



# Folksworth C of E (VC) Primary School

Apreece Road, Folksworth, Peterborough, PE7 3TY

**Headteacher:** Miss Michelle Norbury

**Telephone:** 01733 240562

**Email:** [office@folksworth.cambs.sch.uk](mailto:office@folksworth.cambs.sch.uk)

**Website:** <https://folksworth.eschools.co.uk>



Dear Parents/ Carers,

At parents evening it became clear that many parents / carers would like to support their child with handwriting at home but are unsure how to do so. As a result I have compiled a guide for parents.

## **Handwriting at Folksworth Church of England Primary School: A guide for parents – Foundation Stage**

At Folksworth Church of England Primary School we have adopted a cursive, or 'joined-up' style for handwriting throughout the school. We believe this raises standards in writing in the early years which will impact throughout the whole school, developing confidence, accuracy and fluency and improved presentation.

The cursive handwriting style helps:

- to minimise confusion for the child as every letter starts on the line with an entry stroke and leads out with an exit stroke;
- as letters naturally flow into each other, this helps children to join their handwriting;
- form spacing between words as the child develops whole word awareness;
- to develop a child's visual memory;
- all children's writing skills regardless of academic ability;
- to develop skills of punctuation and grammar.

## **Handwriting Development**

Young children develop the skills needed to write through both gross and fine motor movements. It is therefore important that our very youngest children continue to get opportunities to climb and scramble as well as having access to a range of chunky and fine mark making equipment. If you are able to take your child to a play area with climbing equipment this will be just as beneficial to their writing development as sitting down pens and paper! Our children in Acorn Class are introduced to actual letter formation through phonics teaching as well as focused classroom activities. In particular, children are encouraged to write their first names correctly, using a capital letter for the first letter only.

In Acorn Class, children learn to write with a pencil. The most appropriate grip is the 'tripod grip' which allows both control and fluid movement.

If your child finds it difficult to hold a thin pencil it may be worth investing in something chunkier or pencil grips which are designed to encourage a tripod grip.

We encourage our children to take care with presentation. When children have developed a fluent joined style they have the chance to earn a pen licence.



## **Left Handed Children**

Young children may not favour one hand over the other; however, when they do settle on their right or left hand it is important to be able to support left handed children appropriately.

The following guidelines may be useful when supporting left handed children:

We are committed to providing high quality education in a Christian context, in which our children can flourish and develop as well-rounded individuals.

- The child will need space to his / her left as he / she writes;
- The writing paper is to the left of the child's body midline;
- The paper is tilted up in a clockwise direction;
- The paper is supported with the right hand;
- The writing forearm is parallel with the paper edge as the child writes;
- The writing tool is held sufficiently far from its point to ensure that the child can see what he/she is writing.

### Having a go at home

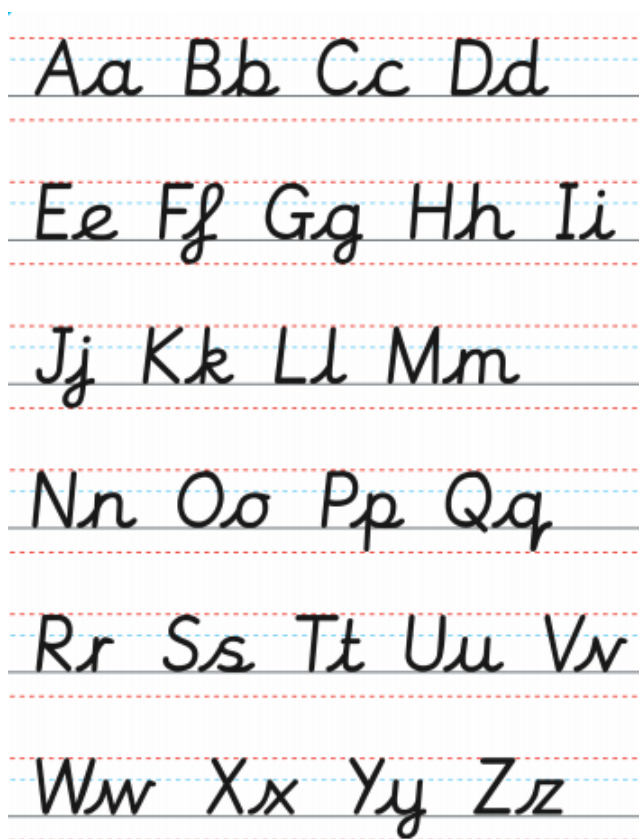
- Make the letter shape using finger paints.
- Let your child practise their letter formation in the air or on your back.
- Go outside and use chalk or wet paint brushes to practice letter formation on the ground.

Upper and lower case letters in our school cursive handwriting script are attached for you to refer to, as well as a handwriting practice sheet for your child.

I hope you find this document useful. If you have any queries about your child's handwriting please do not hesitate to speak to me.

Many thanks

Mrs Duckett



We are committed to providing high quality education in a Christian context, in which our children can flourish and develop as well-rounded individuals.